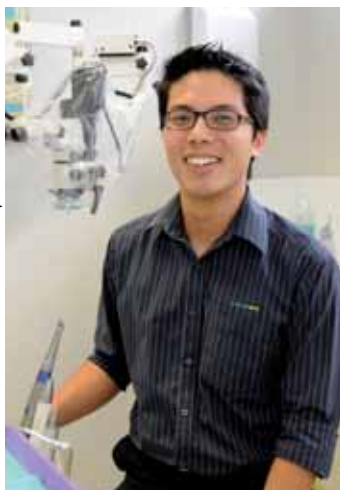


# Paperless instrument tracking a reality

A Townsville dentist is among the first in Australia to link instrument tracking with his paperless patient records using W&H's LISAsafe.



Dr Josh Pond

**J**osh Pond operates the All About Teeth dental surgery and wanted the ability to incorporate instrument tracking into his practice management software.

The solution was provided by local A-dec Dealer, Medical Dental Solutions North Queensland, who supplied a W&H LISA 500 sterilizer together with new 'LISAware' software and a 'LISAsafe' automated barcode label printer.

The new LISAsafe is an automated label printer, which produces barcode labels for each pouch at the completion of each successful cycle in the LISA sterilizer. Each barcode on the LISAsafe labels is easily imported into the patient management notes using a barcode scanner.

Because it interfaces with the LISA autoclave's onboard diagnostics, the LISAsafe has a failsafe feature, which prevents it from printing a label if the load is not successfully completed to cycle specifications.

The accompanying LISAware software is directly linked to the autoclave so the cycle details are automatically stored on the attached PC at the conclusion of each cycle.

Now with very little staff input, each sterilization cycle can be matched with a patient record, providing the ability to trace-back a sterilized instrument to an individual load and

all batch cycle information if required.

As an added safeguard at All About Teeth, the operator also checks the chemical indicator strip on each of the instrument pouches to ensure it has reached the correct temperature as part of the normal sterilization protocols.

The barcode number on each LISAsafe labeled pouch is then imported into the patient notes of the Patient Management Software (in this case eXact) using another hand-held barcode scanner when the patient is in the dental chair.

That way each procedure on every patient can be traced back by using the barcode number on the pouch and matching it with the corresponding record in the LISAware program which stores the complete details of all sterilization cycles.

Dr Pond said he wanted to implement the instrument tracking system to stay ahead of the ADA's infection control guidelines. "Although instrument tracking is currently regarded as a should-do rather than a must-do, I think that will probably change in the future," Dr Pond said.

"I also want to be able to demonstrate to patients that our instruments are safe and to allay any concerns about possible infections as a result of dental treatments.

"Because the tracking is paperless and only requires a barcode scanner to import the sterilizer batch tracking number from the pouch label into the patient notes, it is now part of our routine patient management procedures."

For additional data integrity the LISAsafe information is also manually backed up each day on the main server so the information can be archived indefinitely if required. ♦

More information on the LISAsafe and LISAware system is available from A-dec Australia dealers, or from Shal Hafiz at A-dec Australia on 1800 225 010.

