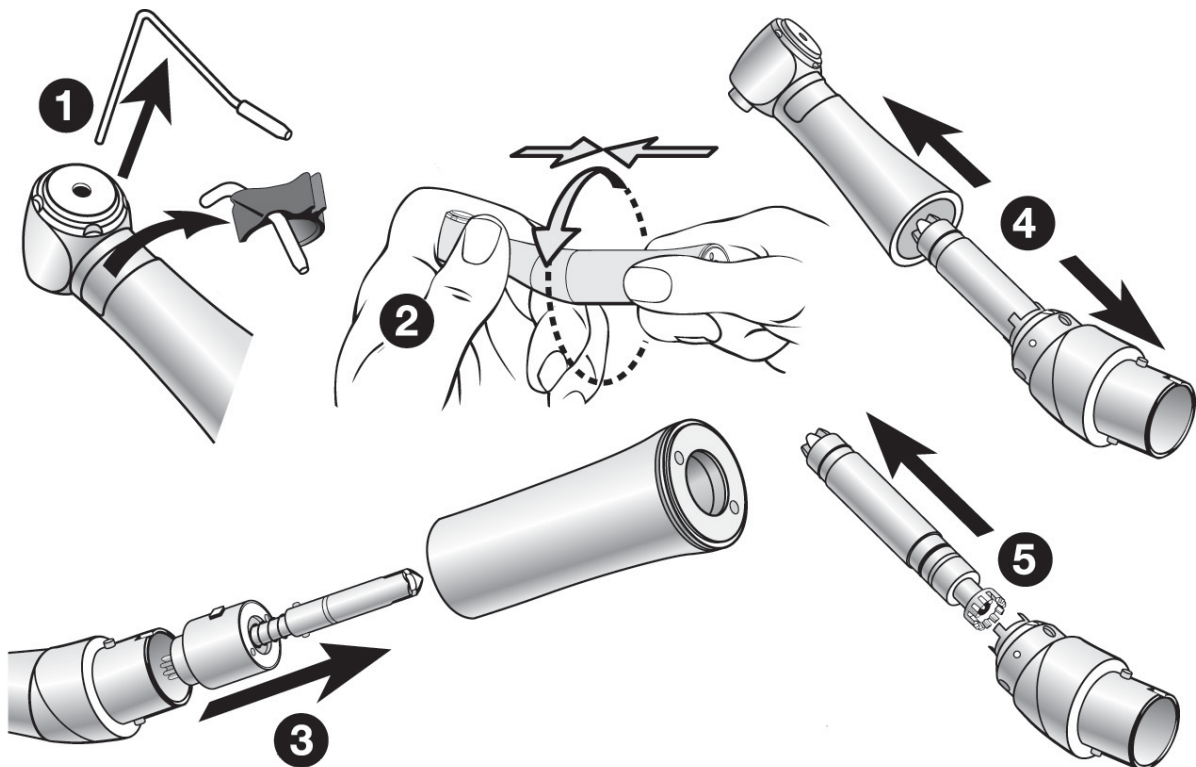




Disassembly of surgical instrument WS-75 E/KM Mark II

- Follow local guidelines regarding protective clothing and eyewear
- Clean instrument immediately after every surgical application
- These instructions are to be used in conjunction with our information sheet “Hygienic Maintenance & Sterilization Instructions” (Ref: UK/HHMSI/1109/5L)
- Remove the rotary implement
- Remove the instrument from the motor



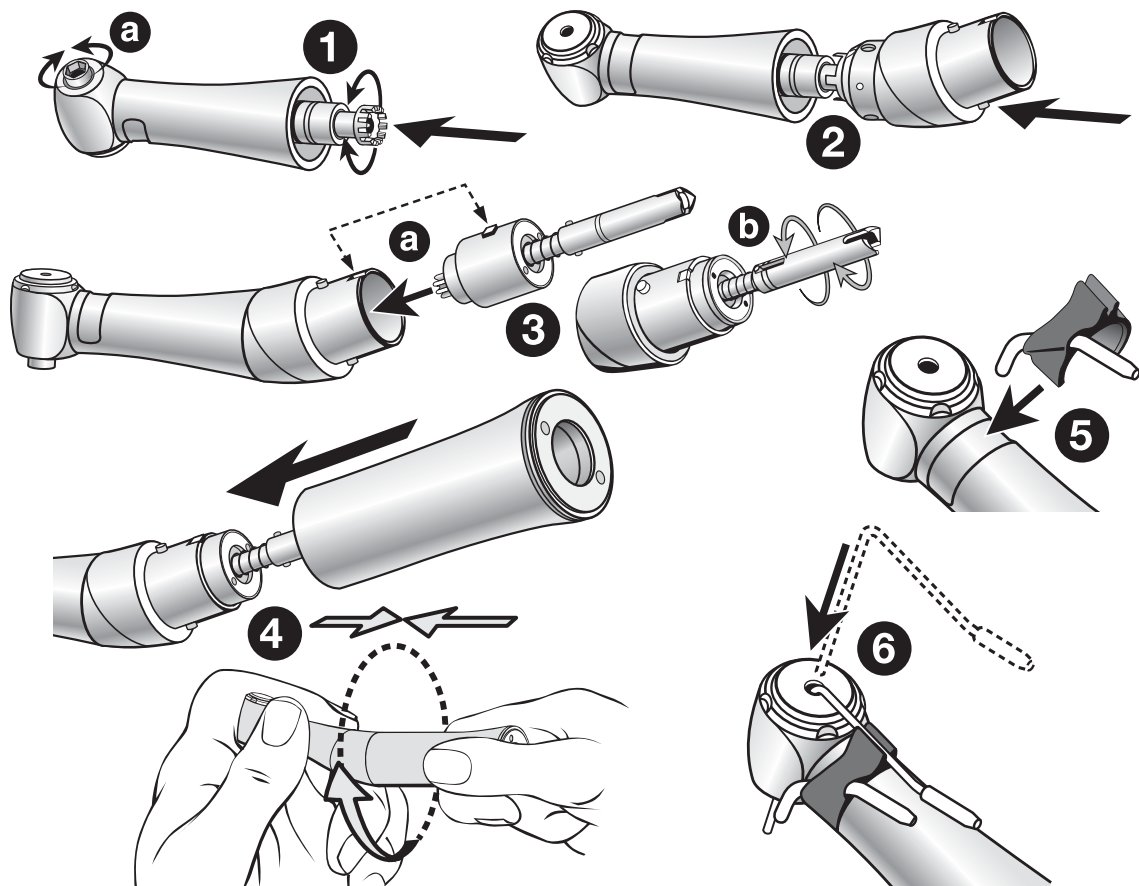
1. Remove the internal irrigation spray tube and external spray clip from the head of the handpiece.
2. Grip the front section of the instrument, whilst twisting the rear section in an anticlockwise direction.
3. Remove base section of handpiece and rear drive dog.
4. Holding the mid section in one hand and the front section in the other, pull to remove in the direction of the arrows.
5. Holding the elbow, pull and remove middle gear section.
6. Using sterile water, remove any debris with a soft brush.
7. Check general condition of the instrument.

When disassembled, the WS-75 E/KM Mark II should have 7 individual parts: back, middle and front body sections, rear drive dog, middle gear, internal irrigation spray supply tube, external spray clip.



Reassembly of surgical instrument WS-75 E/KM Mark II

- Follow local guidelines regarding protective clothing and eyewear.
- Following disinfection, cleaning, and reassembly, the instrument is ready for lubrication and sterilization. Use these instructions in conjunction with our information sheet “Hygienic Maintenance & Sterilization Instructions” (Ref: UK/HHMSI/1109/5L).



Before reassembly, ensure that all parts have identical serial numbers.

1. Holding the head section, insert the middle gear (with the smallest end first) until it clicks into place, ensuring there is free rotation (a).
2. Holding the mid body section, align and insert the head section until it clicks. Note that the head of the instrument can be positioned in 4 different locations.
3. Push the rear drive dog section into the mid section. Ensure that the locating lug is aligned with the corresponding slot (a) and that there is free rotation (b).
4. Holding the mid section, push & twist the rear section as indicated (bayonet fitting).
5. Attach the external irrigation spray clip.
6. Insert the internal irrigation spray supply tube, which clicks into place.