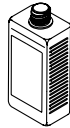
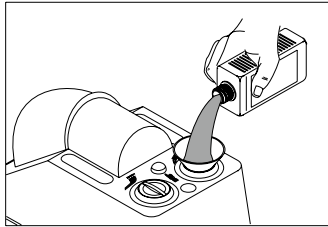




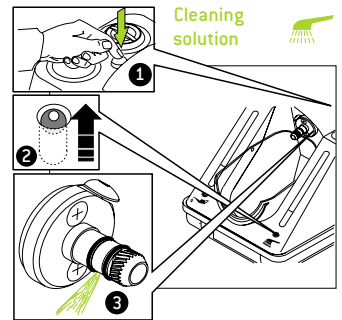
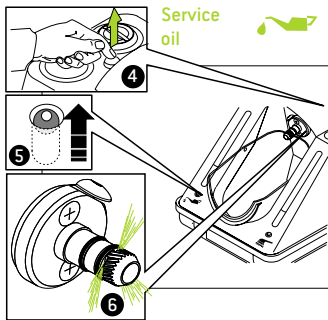
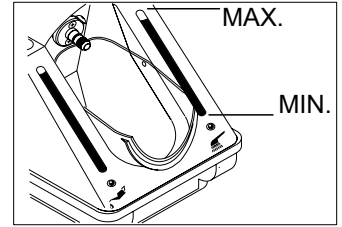
assistina

Weekly checklist

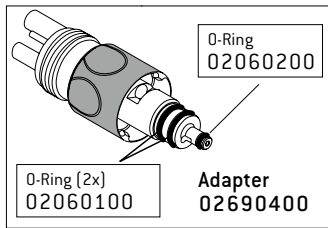


**Check liquid level!
Refill if necessary!**

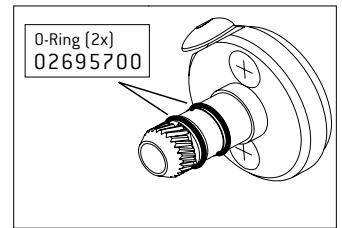
Service oil: 500 ml – 02675910	Cleaning solution: 1000 ml – 02680200
Set 02680500: 1000 ml Cleaning solution and 500 ml Service oil	



Check function!



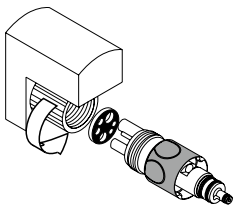
**Check o-rings!
Look for right position
and / or
damage!**



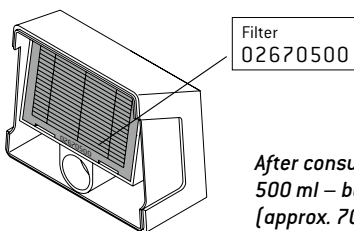
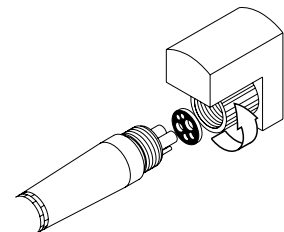
General hints



*When maintaining after every patient – Press program button once!
When maintaining twice a day – Press program button twice!*

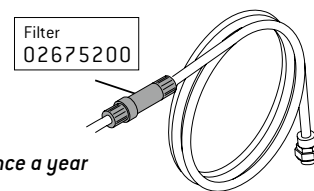


Check connection is tight!



*After consumption of one
500 ml – bottle of Service oil
(approx. 7000 cycles)*

Changing of filters!



Once a year