

SealVal² Manager - Quick Guide



SealVal² ENG – Rev 01

sealval²

Table of contents

1	Introduction	3
2	Installation requirements	3
3	Use	4
3a	LOCAL FILE CONVERSION	5
3b	FILE CONVERSION THROUGH MANUAL MODE	7
3c	FILE CONVERSION THROUGH AUTOMATIC MODE	9

1. Introduction

The SealVal² Manager allows the conversion of the data and results of the sealing process (.sys format) in HTML files.

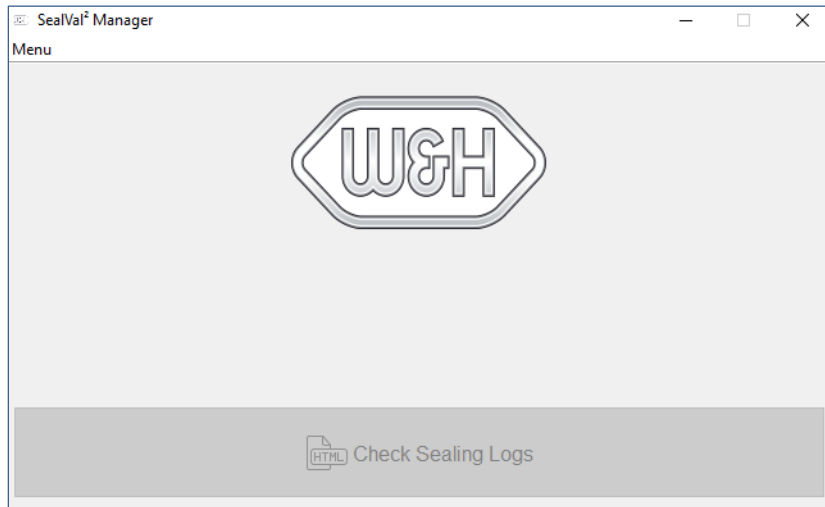
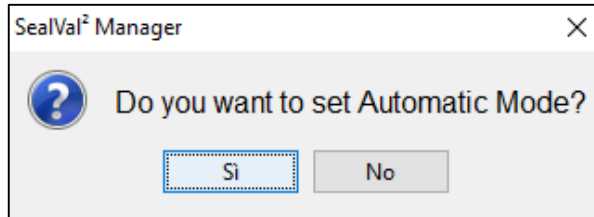
2. Installation requirements

For launching the SealVal² Manager, your PC must have the Java Virtual Machine installed.

NOTE: minimum required version JRE 8.

3. Use

After the SealVal² Manager installation, follow the instructions below:



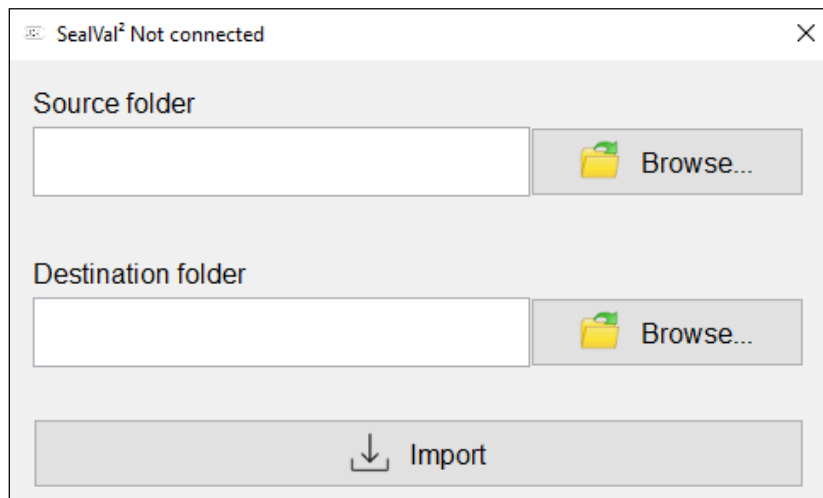
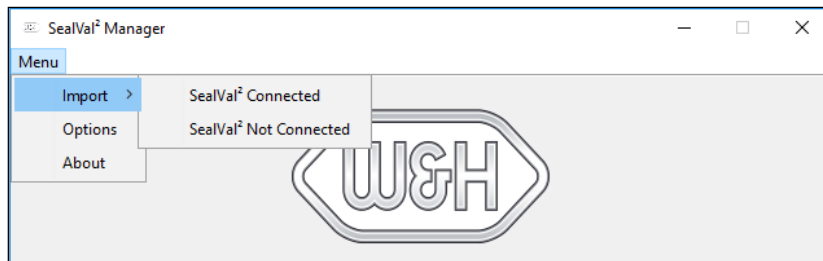
- 1) Double click on “SealVal² Manager.jar”

NOTE: a window for setting the Automatic Mode will be opened.

NOTE: SealVal² Manager has 3 different execution methods:

- a. Local file conversion
SealVal² Manager converts the files locally downloaded on the PC (SealVal² not connected).
- b. File conversion through Manual Mode
SealVal² Manager manually converts the files from the SealVal² (SealVal² connected).
- c. File conversion through Automatic Mode
SealVal² Manager cyclically converts the files from the SealVal², synchronizing automatically the folders (SealVal² connected).

Use



a. LOCAL FILE CONVERSION

1) Select "Menu".

2) Select "Import".

3) Select "SealVal² Not Connected".

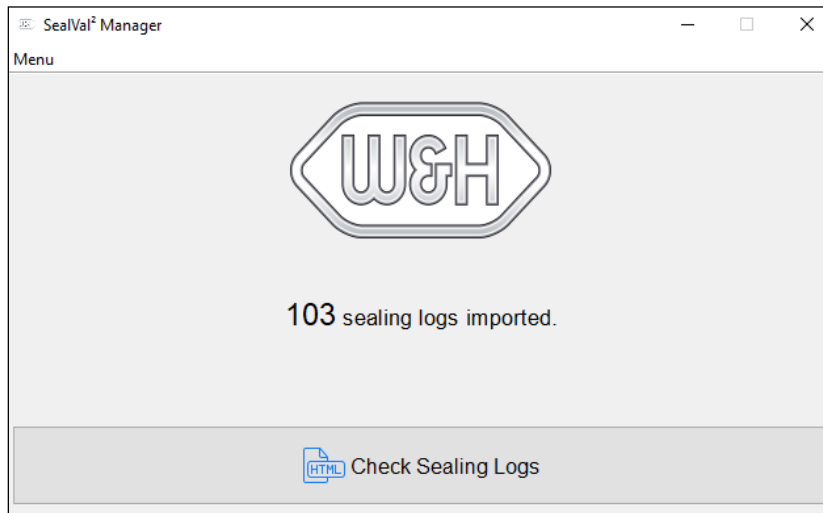
NOTE: a new window will be opened.

4) Insert in the "Source folder" field the full path of the source folder with the .sys files.
NOTE: "Browse" button allows to choose the complete path with guided interface.

5) Insert in the "Destination folder" field the full path of the source folder where the .sys files will be converted in HTML files.
NOTE: "Browse" button allows to choose the full path with guided interface.

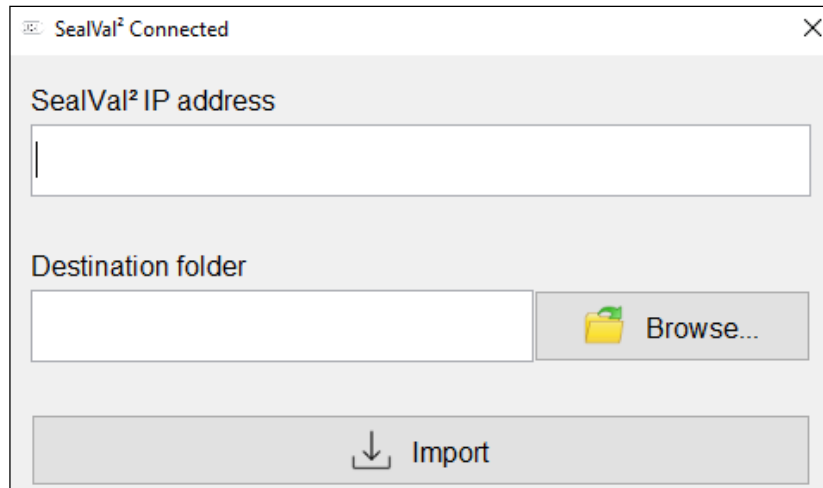
6) Press on "Import" button for importing the .sys files and convert them in HTML format.
NOTE: a waiting message will appear during file conversion.

Use



- 7) The “Import” result will be shown in the main page.
NOTE: “Check Sealing Logs” button, now enabled, will allow to open the file destination folder.

Use



b. FILE CONVERSION THROUGH MANUAL MODE



ATTENTION:

Before starting this procedure check that the SealVal² is connected to a PC with SealVal² Manager already installed.

1) Select "Menu".

2) Select "Import".

3) Select "SealVal² Connected".

NOTE: a new window will be opened.

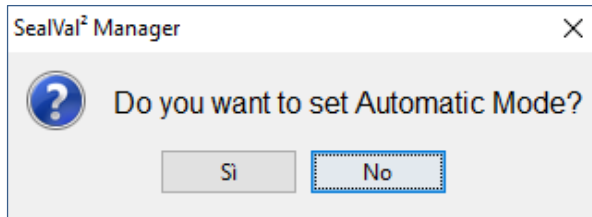
4) Insert in the "SealVal² IP address" field the IP address of the SealVal².

5) Insert in the "Destination folder" field the full path of the source folder where the .sys files will be converted in HTML files.

NOTE: "Browse" button allows to choose the full path with guided interface.

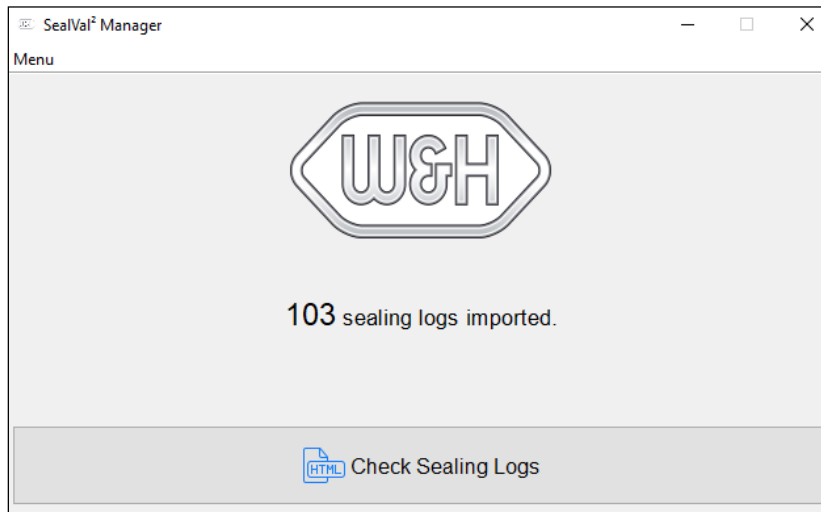
6) Press on "Import" button.

Use



- 7) Press on “No” button for starting the import of the .sys files and converting them in HTML format.

NOTE: a waiting message will appear during file conversion.



- 8) The “Import” result will be shown in the main page.
NOTE: “Check Sealing Logs” button, now enabled, will allow to open the file destination folder.

Use

c. FILE CONVERSION THROUGH AUTOMATIC MODE

NOTE: the Automatic Mode converts the files cyclically, synchronizing automatically the folders (by default every 10 seconds), without the interaction of the user.

NOTE: the time can be set in the "Options" section.



1) Select "Menu".

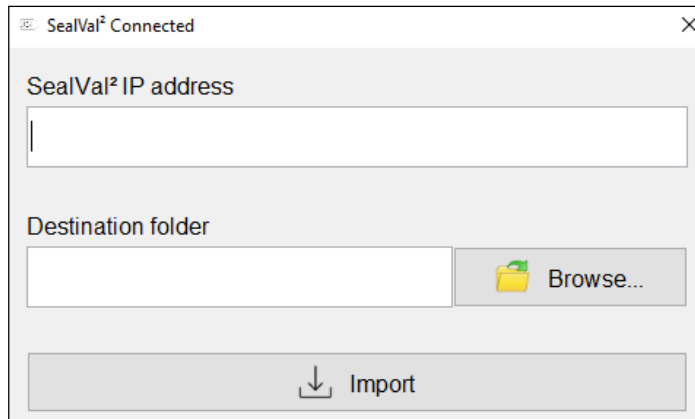


2) Select "Import".

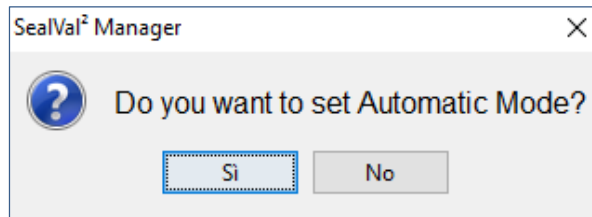
3) Select "SealVal² Connected".

NOTE: a new window will be opened.

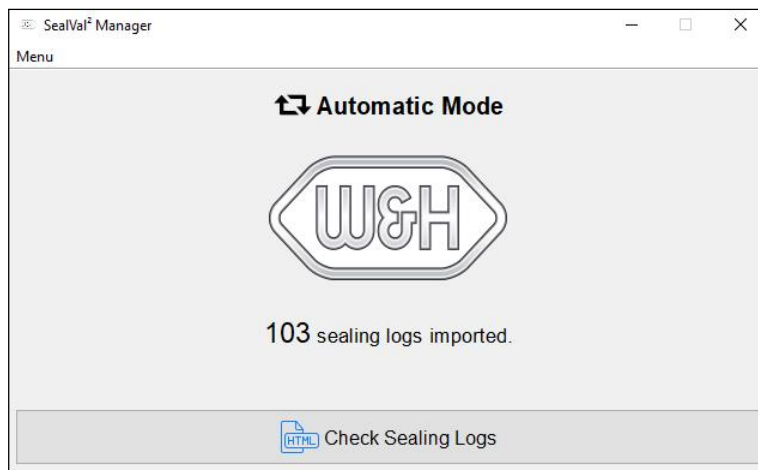
Use



- 4) Insert in the "SealVal² IP address" field the IP address of the SealVal².
- 5) Insert in the "Destination folder" field the full path of the source folder where the .sys files will be converted in HTML files.
NOTE: "Browse" button allows to choose the full path with guided interface.
- 6) Press on "Import" button.

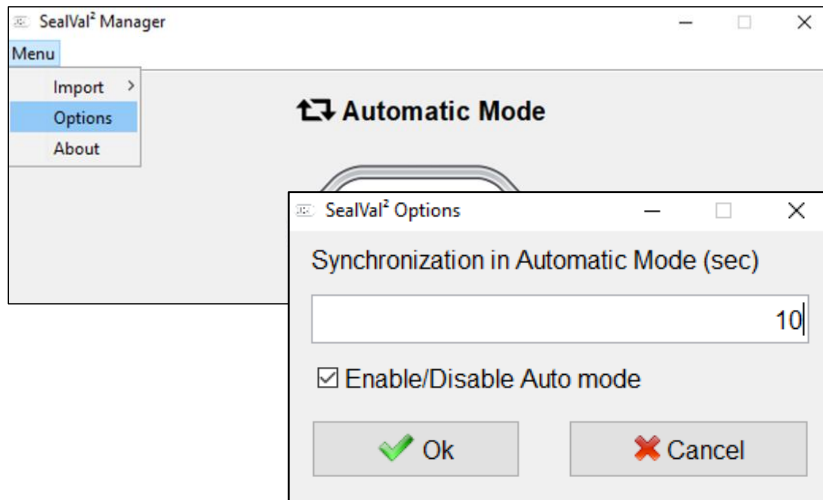


- 7) Press on "Yes" button for starting the import of the .sys files and convert them in HTML format.
NOTE: a waiting message will appear during file conversion.



- 8) The "Import" result will be shown in the main page.
NOTE: a message on the top of the page informs that the Automatic Mode is enabled.
NOTE: "Check Sealing Logs" button, now enabled, will allow to open the file destination folder.

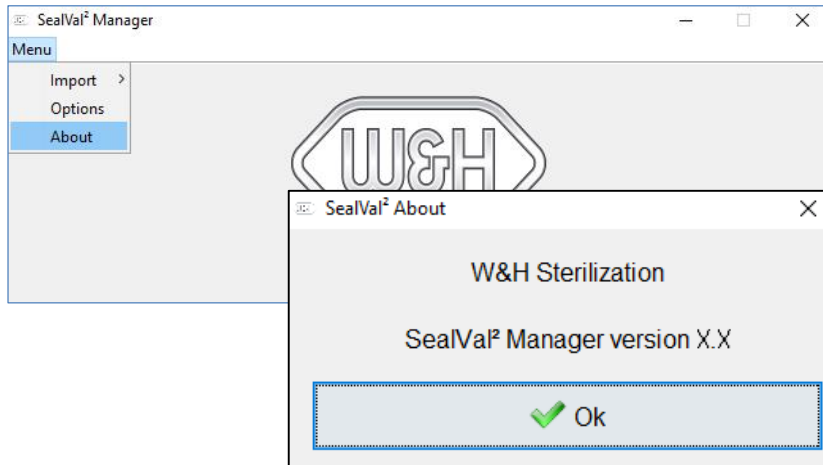
Use



9) Select “Options”.

NOTE: the “Options” window allows to:

- set the Automatic Mode waiting interval;
- enable/disable the Automatic Mode.



10) Select “About”.

NOTE: the “About” window shows the Manager software version.

Manufacturer

W&H Sterilization S.r.l.

Italy, I-24060 Brusaporto (Bg), via Bolgara, 2

t +39/035/66 63 000

f +39/035/50 96 988

wh.com

SealVal² Manager Quick Guide ENG - Rev 01

Subject to alterations

03/08/2021